



MONTHLY MEMBERSHIP PROGRESS REPORT

District 105 A

Results as of: 06/30/2019

GMT: JOOST PAIJMANS

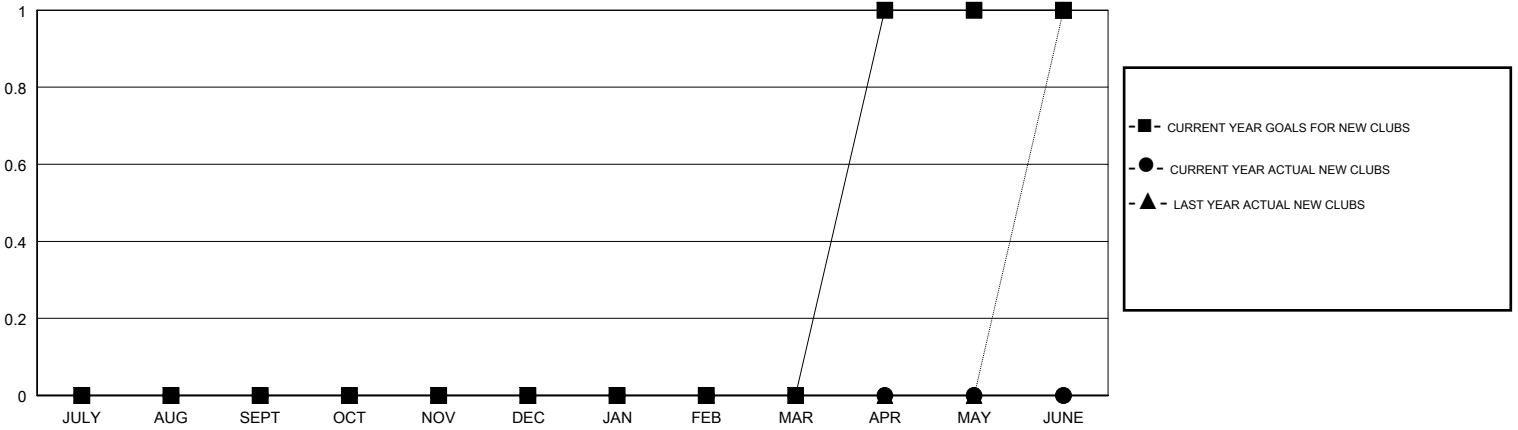
LOCATION ENGLAND

GMT CA

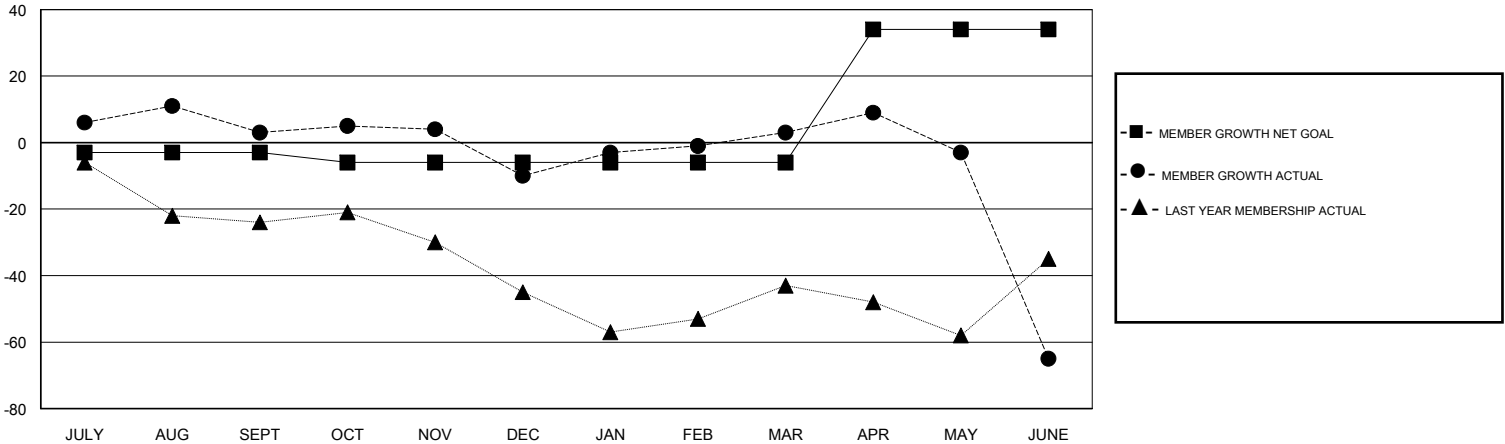
Clubs			
RESULTS FOR 2018-2019			
QUARTER	NEW CLUB GOAL	NEW CLUBS	DROPPED CLUBS
JULY/AUG/SEPT	0	0	0
OCT/NOV/DEC	0	0	0
JAN/FEB/MAR	0	0	0
APR/MAY/JUNE	1	0	1

Members			
RESULTS FOR 2018-2019			
QUARTER	MEMBER GROWTH NET GOAL	MEMBER GROWTH ACTUAL	DROPPED MEMBERS ACTUAL (including transfers)
JULY/AUG/SEPT	-3	34	25
OCT/NOV/DEC	-3	27	35
JAN/FEB/MAR	0	34	16
APR/MAY/JUNE	40	40	103

GOALS AND ACTUAL NEW CLUBS CUMULATIVE



GOALS AND ACTUAL MEMBERS CUMULATIVE



DROPPED CLUBS: 1

44 CLUBS OF 68 ADDED 1 OR MORE NEW MEMBERS

GENDER DISTRIBUTION	
MALE	1,016 (75.26%)
FEMALE	334 (24.74%)
Women Percentage Fiscal Year Goal: 28%	

DROPPED MEMBERS	
DECEASED	18
CLUB CANCELLED	21
OTHER	140
TOTAL	179

[CLICK HERE FOR CUMULATIVE MEMBERSHIP DATA](#)

TOTAL FAMILY UNIT MEMBERS	103
FAMILY MEMBERS PAYING HALF DUES	53